



INTEQ

Company : CO2CRC

Well : CRC-1

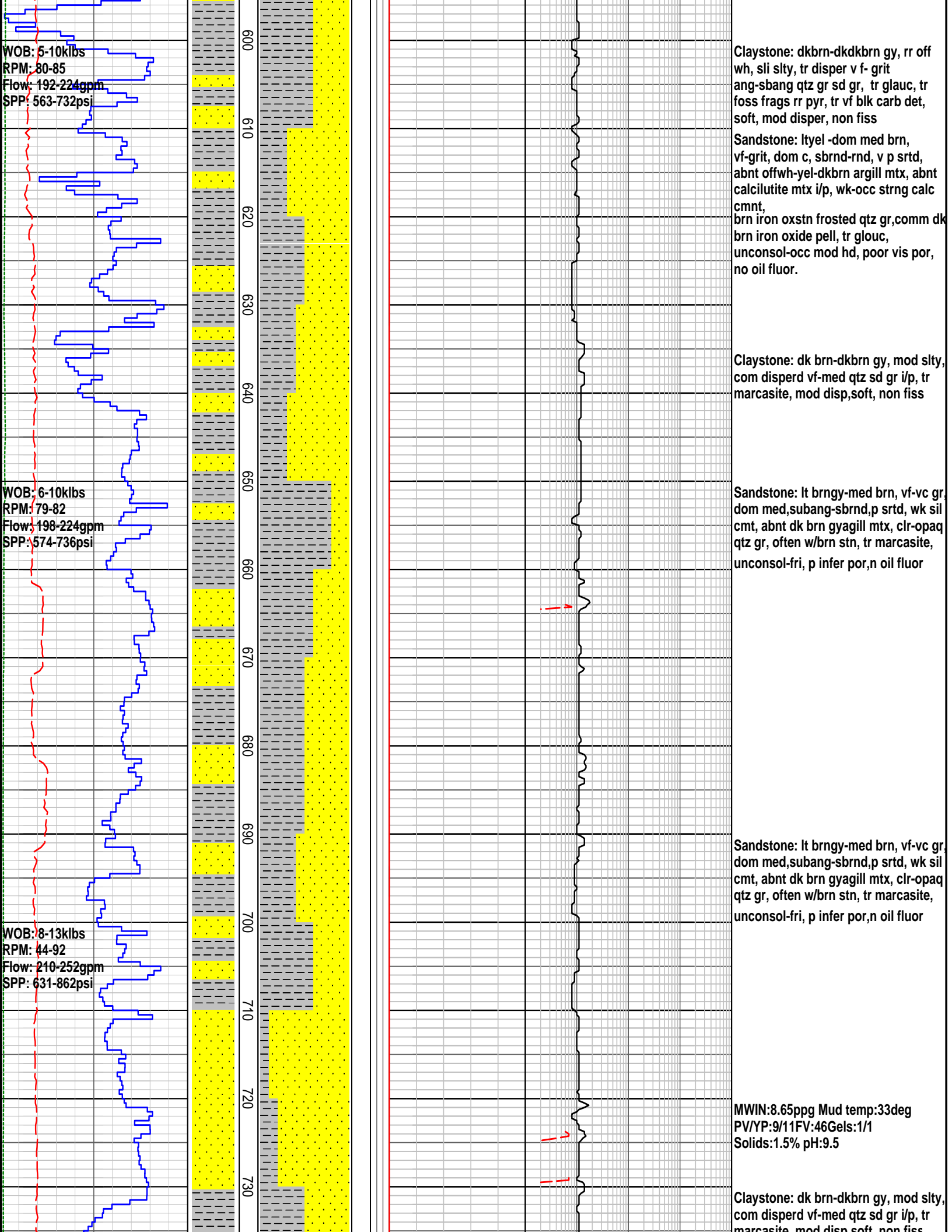
Interval : 500.00 - 790.00 meters

Created : 21/Feb/2007 6:05:57 AM



### FORMATION EVALUATION LOG

RATE OF PENETRATION ROP (0-100m/hr) Backup ROP (100-200m/hr) WOB (klb) TORQUE AVG	INTERPRETED LITHOLOGY	MD meters	LITHOLOGY	CORE	OIL SHOWS	TOTAL GAS	CHROMATOGRAPH	REMARKS
						0.1   0.2   0.3   0.4   0.5 %	1 Methane ppm 10000 1 Ethane ppm 10000 1 Propane ppm 10000 1 iso-Butane ppm 10000 1 n-Butane ppm 10000 1 iso-Pentane ppm 10000 n-Pentane ppm 10   100   1000   10000	
<p>WQB: 24-27klbs RPM: 100-105 Flow: 490-506gpm SPP: 535-1540psi</p> <p>17/02/2007</p> <p>NB2 6-3/4" M56S PDC Jets: 5 x 12, In: 516m, Out: xxxm Drilled: xxxm in xx.xhrs Bit Grade: x-x-xx-x-x-xx-xx</p> <p>WQB: 9-15klbs RPM: 80-110 Flow: 294-510gpm SPP: 890-1518psi</p>		0 510 520 530 540 550 560 570 580 590						<p>Survey @ 506m = 1.00 deg incl</p> <p>MWIN:9.0ppg Mud temp:47deg PV/YP:12/38FV:49Gels:25/37 Solids:4.4% pH:8.0</p> <p>LOT @ 519m = 13.3ppg EMW</p> <p>Claystone: dkbrn-dkdkbrn gy, rr off wh, sli slty, tr disper v f- grit ang-sbang qtz gr sd gr, tr glauc, tr foss frags rr pyr, tr vf blk carb det, soft, mod disper, non fiss</p> <p>MWIN:8.45ppg Mud temp:32deg PV/YP:9/10FV:48Gels:1/1 Solids:0.3% pH:10.0</p> <p>Sandstone: ltyell-med brn, vf-grit, dom c, sbrnd-rnd, v p srted, abnt off wh, -yel-dk brn argll mtx, abnt calcitide mtx i/p, wk-occ srtnng calc cmt, brn iron ox stn frost qtz gr, comm dk brn iron ox pell, tr galuc, unconsol-occ mod hd, pviss por, no oil flour.</p>



WOB: 5-10klbs  
 RPM: 80-85  
 Flow: 192-224gpm  
 SPP: 563-732psi

WOB: 6-10klbs  
 RPM: 79-82  
 Flow: 198-224gpm  
 SPP: 574-736psi

WOB: 8-13klbs  
 RPM: 44-92  
 Flow: 210-252gpm  
 SPP: 631-862psi

Claystone: dkbrn-dkdkbrn gy, rr off wh, sli slty, tr disper v f-grit ang-sbang qtz gr sd gr, tr glauc, tr foss frags rr pyr, tr vf blk carb det, soft, mod disper, non fiss

Sandstone: ltyel-dom med brn, vf-grit, dom c, sbrnd-rnd, v p srted, abnt offwh-yel-dkbrn argill mtx, abnt calcilitite mtx i/p, wk-occ strng calc cmnt, brn iron oxstn frosted qtz gr, comm dk brn iron oxide pell, tr glouc, unconsol-occ mod hd, poor vis por, no oil fluor.

Claystone: dk brn-dkbrn gy, mod slty, com disperd vf-med qtz sd gr i/p, tr marcasite, mod disp, soft, non fiss

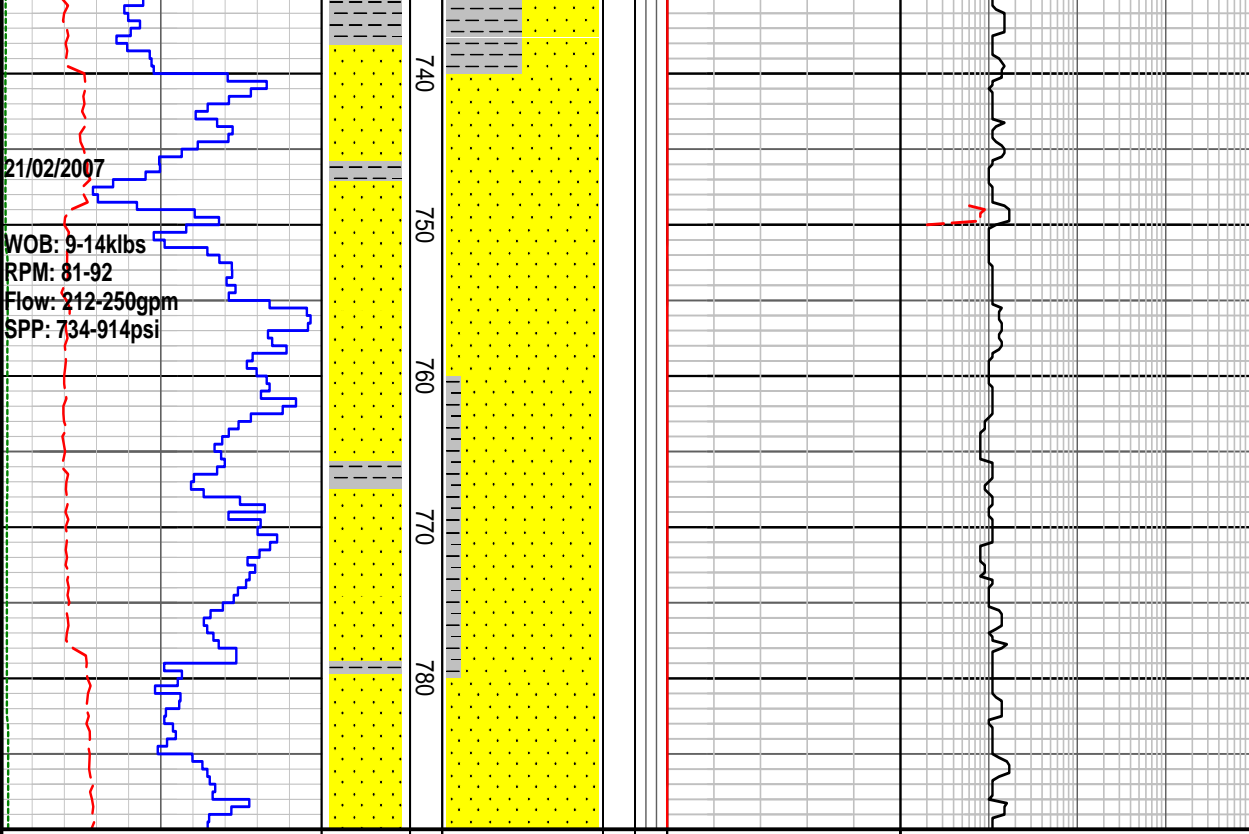
Sandstone: lt brngy-med brn, vf-vc gr, dom med, subang-sbrnd, p srted, wk sil cmt, abnt dk brn gyagill mtx, clr-opaq qtz gr, often w/brn stn, tr marcasite, unconsol-fri, p infer por, n oil fluor

Sandstone: lt brngy-med brn, vf-vc gr, dom med, subang-sbrnd, p srted, wk sil cmt, abnt dk brn gyagill mtx, clr-opaq qtz gr, often w/brn stn, tr marcasite, unconsol-fri, p infer por, n oil fluor

MWIN: 8.65ppg Mud temp: 33deg  
 PV/YP: 9/11 FV: 46 Gels: 1/1  
 Solids: 1.5% pH: 9.5

Claystone: dk brn-dkbrn gy, mod slty, com disperd vf-med qtz sd gr i/p, tr marcasite, mod disp soft, non fiss

marcasite, mod disp, sort, non iss



Sandstone: lt brngy-med brn, vf-vc gr, dom med, subang-sbrnd, p srted, wk sil cmt, abnt dk brn gyagill mtx, clr-opaq qtz gr, often w/brn stn, tr marcasite,

Sandstone: vlt brngy, vf-vc gr, dom c, subang-sbrnd, pr srted, wk sil cmt, com dk brn gy agill mtx, clr-opaq qtz gr occ w yel stng, tr c muscovite flks, tr bk coal det, tr marcasite, fri, gd inferred por, n oil fluor

### FORMATION EVALUATION LOG

RATE OF PENETRATION		INTERPRETED LITHOLOGY	MD meters 1:500	LITHOLOGY	CORE	OIL SHOWS	TOTAL GAS	CHROMATOGRAPH				REMARKS
ROP (0-100m/hr)	Backup ROP (100-200m/hr)							1	Methane ppm	10000		
10   20   30   40   50	100   120   140   160   180   200						0.1   0.2   0.3   0.4   0.5 %	1	Ethane ppm	10000		
5   10   15   20   25   30   35   40   45   50	5   10   15   20   25   30   35   40   45   50							1	Propane ppm	10000		
								1	iso-Butane ppm	10000		
								1	n-Butane ppm	10000		
								1	iso-Pentane ppm	10000		
									n-Pentane ppm	10000		